



**DORO**

LIGHTING SOLUTIONS

# ***INDOOR***

# **CATALOG 3** 2026

# QUALITY

At DORO Lights, quality is embedded in every step—from sourcing premium materials to meticulous craftsmanship. Our lights undergo strict checks to ensure they meet the highest standards before reaching our customers.



# INNOVATION

We constantly push boundaries by integrating smart technology and ontemporary design trends. DORO Lights creates unique lighting solutions that enhance both ambiance and functionality.



# WARRANTY

We believe in the durability of our products, which is why each DORO light comes with a comprehensive warranty. It reflects our confidence and commitment to long-term customer trust and satisfaction.

# The History of Lights



**1802**

*Humphry Davy*

Invented the Electrical ARC lamp.



**1840**

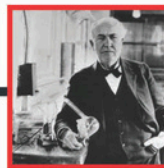
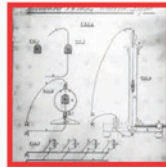
*Warren de la Rue*

Built a light bulb using a platinum filament that was coiled inside a vacuum tube.

**1874**

*Henry Woodwar & Mathew Evans*

Built a light bulb using a platinum filament that was coiled inside a vacuum tube.



**1878**

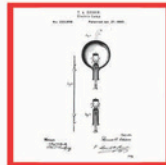
*Thomas Edison*

Filed a patent under the label "improvement in Electric Lights."

**1879**

*Edison*

Submitted another patent.



**1880**

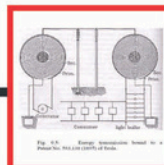
*Edison*

Began marketing and manufacturing the latest version of his bulb to commercial clients & built the first central power plant in the U.S

**1893**

*General Electric*

Produced the first enclosed carbon arc lamp for commercial clients.



**1893**

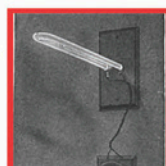
*Nikla Tesla*

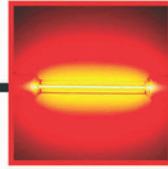
Demonstrated the possibility of wireless electricity, which he used to light a geissler tube.

**1901**

*Peter Cooper Hewitt*

Introduced the Mercury-Vapor Lamp (gas discharge lamp).





**1910**

*Georges Claude*  
Demonstrated Neon Lighting.

**1926**

*Edmund Germer*  
Submitted his patent for the first fluorescent lamp.



**1938**

*Fluorescent lighting*  
technology was commercialize

**1961**

*James Beard &  
Gary Pittman*  
Invented LEDs



**1962**

*Nick Holonyak Jr.*  
produced the first LED that  
emitted light in a visible brand

**1872**

*M. George Craford*  
Produced a yellow LED.



**1979**

*Shuji Nakamura*  
Developed a blue LED.

**1980**

*Philips*  
released its SL model of  
the compact fluorescent  
lamp (CFL).



**2006**

*LEDs*  
were finally a competitive  
lighting option

**2011**

*Philips*  
released its SL model of  
the compact fluorescent  
lamp (CFL).



**NOW**





## LINEAR



PRODUCT CODE	WATT	SIZE (LxWxH)	BEAM ANGLE	INPUT VOLTAGE	CCT
DRL-G 2197	8W	330x38x10 mm	100°	48V	CCT-Tunable 2700k-5500k
DRL-G 2198	12W	440x38x10 mm	100°	48V	
DRL-G 2199	16W	630x38x10 mm	100°	48V	
DRL-G 2200	24W	925x358x10 mm	100°	48V	

## LINEAR MOVABLE



PRODUCT CODE	WATT	SIZE (LxWxH)	BEAM ANGLE	INPUT VOLTAGE	CCT
DRL-G 2201	8W	225x72x10 mm	100°	48V	CCT-Tunable 2700k-5500k
DRL-G 2202	16W	330x38x10 mm	100°	48V	

## LASER SPOT



PRODUCT CODE	WATT	SIZE (LxWxH)	BEAM ANGLE	INPUT VOLTAGE	CCT
DRL-G 2203	5W	145X38X10 mm	100°	48V	CCT-Tunable 2700k-5500k
DRL-G 2204	10W	225X38X10 mm	100°	48V	
DRL-G 2205	15W	320X38X10 mm	100°	48V	
DRL-G 2206	20W	418X38X10 mm	100°	48V	

## LASER MOVABLE



PRODUCT CODE	WATT	SIZE (LxWxH)	BEAM ANGLE	INPUT VOLTAGE	CCT
DRL-G 2207	5W	145x73x10 mm	15°/24°/36°	48V	CCT-Tunable 2700k-5500k
DRL-G 2208	10W	225x73x10 mm	15°/24°/36°	48V	

## TRACK SPOT



PRODUCT CODE	WATT	SIZE (LxWxH)	BEAM ANGLE	INPUT VOLTAGE	CCT
DRL-G 2209	5W	Ø38x100	15°/24°/36°	48V	CCT-Tunable 2700k-5500k
DRL-G 2210	10W	Ø60x120	15°/24°/36°	48V	

## ECLIPSE



PRODUCT CODE	WATT	SIZE (LxWxH)	BEAM ANGLE	INPUT VOLTAGE	CCT
DRL-G 2211	12W	Ø114x35	100°	48V	CCT-Tunable 2700k-5500k
DRL-G 2212	18W	Ø138x35	100°	48V	

## FOSTER



PRODUCT CODE	WATT	SIZE (LxWxH)	BEAM ANGLE	INPUT VOLTAGE	CCT
DRL-G 2213	6W	Ø50x74	15°/24°/36°	48V	CCT-Tunable 2700k-5500k

## HANGING



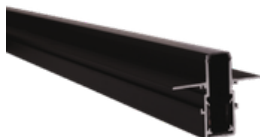
PRODUCT CODE	WATT	SIZE (LxWxH)	BEAM ANGLE	INPUT VOLTAGE	CCT
DRL-G 2214	6W	Ø75x90	40°	48V	CCT-Tunable 2700k-5500k

### SURFACE TRACK CHANNEL



PRODUCT CODE	SIZE (LxWxH)	LENGTH	INPUT VOLTAGE
DRL-G 2215 A	1000x17x26 MM	1 MTR	48V
DRL-G 2215 B	2000x17x26 MM	2 MTR	48V

### RECESSED TRACK CHANNEL



PRODUCT CODE	SIZE (LxWxH)	LENGTH	INPUT VOLTAGE
DRL-G 2216 A	1000x50x40 MM	1 MTR	48V
DRL-G 2216 B	2000x50x40 MM	2 MTR	48V

### ROUND PENDANT TRACK CHANNEL



PRODUCT CODE	SIZE (LxWxH)	LENGTH	INPUT VOLTAGE
DRL-G 2217 A	1000xØ29	1 MTR	48V
DRL-G 2217 B	2000xØ29	2 MTR	48V

### 90° TRACK CHANNEL



RECESSED



SURFACE

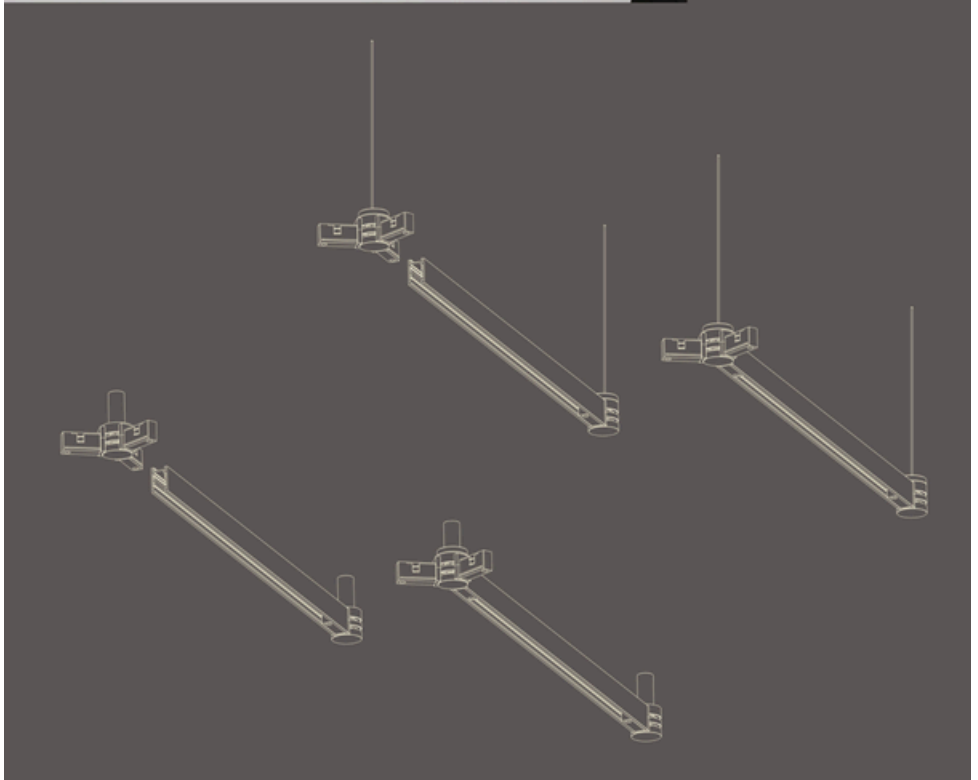
PRODUCT CODE	SIZE (LxWxH)	INPUT VOLTAGE
DRL-G 2218 S	Ø900x670	48V
DRL-G 2218 R	Ø900x690	48V



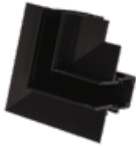
**M**ultiple

**L**inking

**M**ethods



## 10MM JOINTER & ACCESSORIES



**DRL-G 2219 RL**

10MM RECESSED  
L JOINTER



**DRL-G 2219 RT**

10MM RECESSED  
T JOINTER



**DRL-G 2219 RX**

10MM RECESSED  
X JOINTER



**DRL-G 2219 SIC**

10MM SURFACE INNER  
CORNER



**DRL-G 2219 SL**

10MM SURFACE  
L JOINTER



**DRL-G 2219 ST**

10MM SURFACE  
T JOINTER



**DRL-G 2219 SX**

10MM SURFACE  
X JOINTER



**DRL-G 2219 3WC**

10MM 3 WAY  
CONNECTOR



**DRL-G 2219 4WC**

10MM 4 WAY  
CONNECTOR



**DRL-G 2219 PC**

10MM POWER  
CONNECTOR



**DRL-G 2219 SC**

10MM STRAIGHT  
CONNECTOR



**DRL-G 2219 LC**

10MM  
L CONNECTOR



**DRL-G 2219 FIW**

10MM FLEXIBLE  
1 WAY CONNECTOR

## 10MM JOINTER & ACCESSORIES



**DRL-G 2219 F2W**

10MM FLEXIBLE  
2 WAY CONNECTOR



**DRL-G 2219 F3W**

10MM FLEXIBLE  
3 WAY CONNECTOR



**DRL-G 2219 F4W**

10MM FLEXIBLE  
4 WAY CONNECTOR



**DRL-G 2219 FHIW**

10MM FLEXIBLE  
HANGING 1 WAY  
CONNECTOR



**DRL-G 2219 FH2W**

10MM FLEXIBLE  
HANGING 2 WAY  
CONNECTOR



**DRL-G 2219 FH3W**

10MM FLEXIBLE  
HANGING 3 WAY  
CONNECTOR



**DRL-G 2219 FH4W**

10MM FLEXIBLE  
HANGING 4 WAY  
CONNECTOR



**DRL-G 2219 REP**

10MM RECESSED  
END CAP



**DRL-G 2219 SEP**

10MM SURFACE  
END CAP



**DRL-G 2219 ROEP**

10MM ROUND  
END CAP



**DRL-G 2219 RAS**

10MM RECESSED  
ACCESSORIES



**DRL-G 2219 SAS**

10MM SURFACE  
ACCESSORIES



**DRL-G 2219 HWS**

10MM SURFACE  
HANGING WIRE



**DRL-G 2219 100W**

10MM 48V 100W  
POWER SUPPLY



**DRL-G 2219 200W**

10MM 48V 200W  
POWER SUPPLY

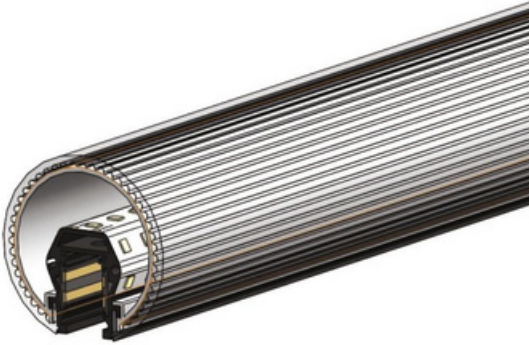


**DRL-G 2219 150W**

10MM 48V 150W  
POWER SUPPLY



## 50MM ROUND TUBE TRACK



PRODUCT CODE	WATT	SIZE (LxWxH)	BEAM ANGLE	INPUT VOLTAGE	CCT
DRL-G 2220	10W	Ø50xL500	0.5 MTR	48V	Tuya BT. Double Colour 2700k-6000k
DRL-G 2221	20W	Ø50xL1000	1 MTR	48V	
DRL-G 2222	40W	Ø50xL2000	2 MTR	48V	
DRL-G 2223	50W	Ø50xL2500	2.5 MTR	48V	

## 50MM ACCESSORIES & CONNECTOR



**DRL-G 2224 EA**

10MM ROUND-50  
END CAP



**DRL-G 2224 EB**

10MM ROUND-50 END  
CAP WITH HOLE



**DRL-G 2224 TC**

10MM ROUND-50  
TRACK CONNECTION



**DRL-G 2224 HEA**

10MM ROUND-50  
HANGING END CAP



**DRL-G 2224 HEB**

10MM ROUND-50 HANGING  
END CAP WITH HOLE



**DRL-G 2224 HTC**

10MM ROUND-50 HANGING  
TRACK CONNECTION



**DRL-G 2224 EC**

10MM ROUND-50  
CEILING END CAP



**DRL-G 2224 VTC**

10MM ROUND-50 VERTICAL  
TRACK CONNECTOR



**DRL-G 2224 TU**

10MM ROUND-50 2MTR  
CABLE - TRACK UP



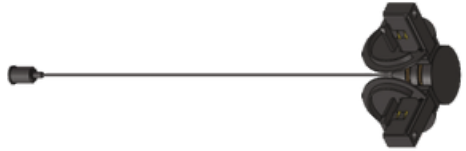
**DRL-G 2224 TD**

10MM ROUND-50 2MTR  
CABLE - TRACK DOWN



**DRL-G 2224 PC**

10MM ROUND-50  
POWER CONNECTOR



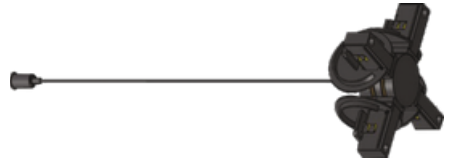
**DRL-G 2224 2WTC**

10MM ROUND-50  
2 WAY HANGING TRACK CONNECTION



**DRL-G 2224 3WTC**

10MM ROUND-50  
3 WAY HANGING TRACK CONNECTION



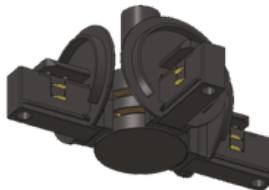
**DRL-G 2224 4WTC**

10MM ROUND-50  
4 WAY HANGING TRACK CONNECTION



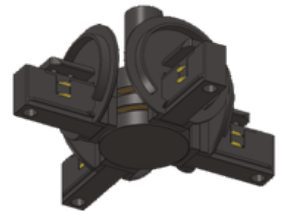
**DRL-G 2224 2WCT**

10MM ROUND-50 2WAY  
CEILING TRACK CONNECTION



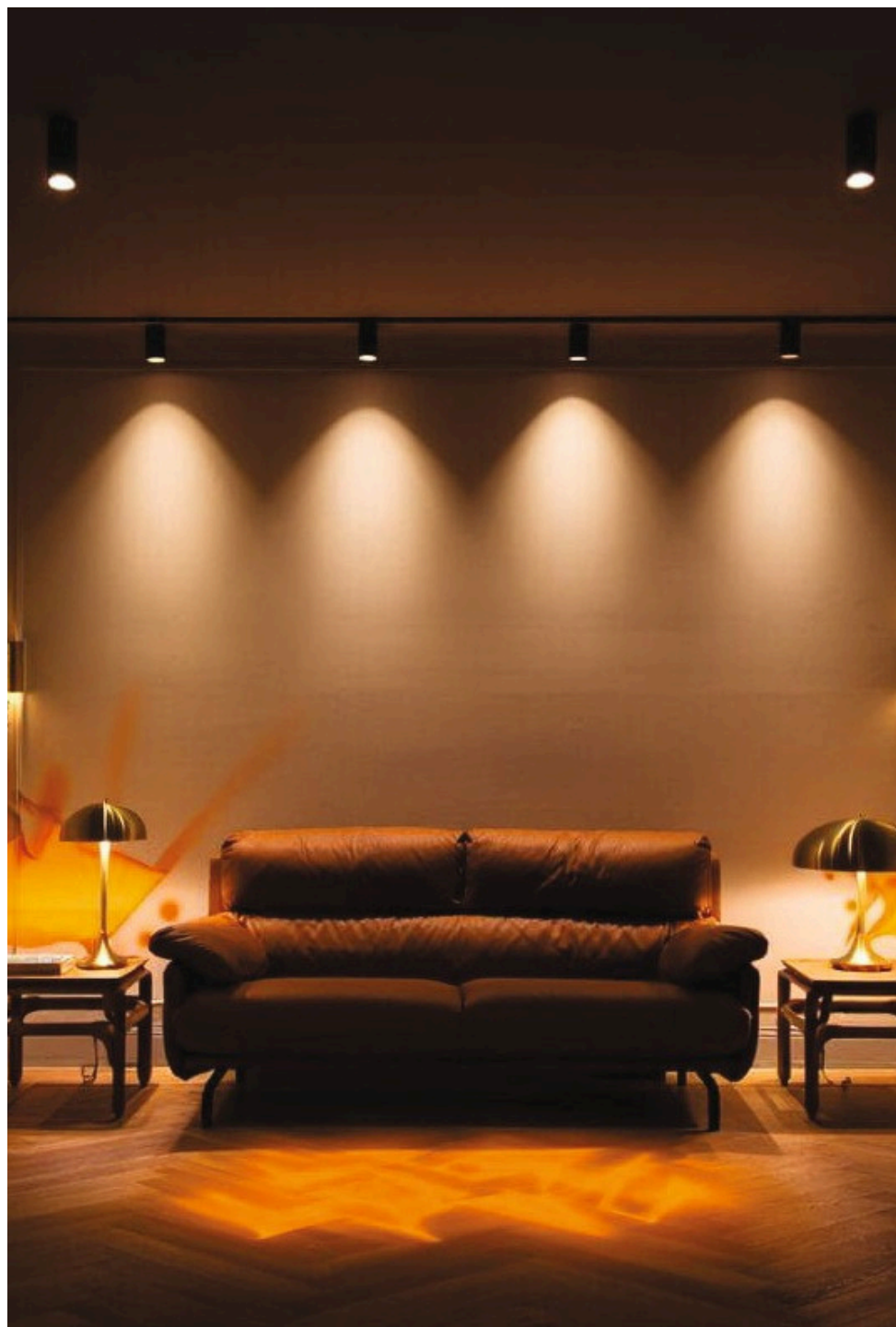
**DRL-G 2224 3WCT**

10MM ROUND-50  
3 WAY CEILING TRACK CONNECTION



**DRL-G 2224 4WCT**

10MM ROUND-50  
4 WAY CEILING TRACK CONNECTION



# LINEAR



PRODUCT CODE	WATT	SIZE (LxWxH)	BEAM ANGLE	INPUT VOLTAGE	CCT
DRL-G 2225	10W	305x43x20 mm	100°	48V	CCT-Tunable 2700k-5500k 3CCT Switch+ Smart (Tuya)
DRL-G 2226	15W	455x43x20 mm	100°	48V	
DRL-G 2227	20W	605x53x20 mm	100°	48V	
DRL-G 2228	30W	905x50x20 mm	100°	48V	
DRL-G 2229	40W	1205x45x20 mm	100°	48V	

# LASER



PRODUCT CODE	WATT	SIZE (LxWxH)	BEAM ANGLE	INPUT VOLTAGE	CCT
DRL-G 2230	6W	205x45x20 mm	24°	48V	CCT-Tunable 2700k-5500k 3CCT Switch+ Smart (Tuya)
DRL-G 2231	12W	220x45x20 mm	24°	48V	
DRL-G 2232	18W	330x45x20 mm	24°	48V	
DRL-G 2233	24W	440x45x20 mm	24°	48V	

## LASER MOVEABLE



PRODUCT CODE	WATT	SIZE (LxWxH)	BEAM ANGLE	INPUT VOLTAGE	CCT
DRL-G 2234	6W	125x114x20 mm	24°	48V	CCT-Tunable 2700k-5500k 3CCT Switch+ Smart (Tuya)
DRL-G 2235	12W	220x110x20 mm	24°	48V	

## TRACK SPOT



PRODUCT CODE	WATT	SIZE (LxWxH)	BEAM ANGLE	INPUT VOLTAGE	CCT
DRL-G 2236	7W	80xØ35	24°	48V	CCT-Tunable 2700k-5500k 3CCT Switch+ Smart (Tuya)
DRL-G 2237	12W	100xØ45	24°	48V	
DRL-G 2238	18W	120xØ60	24°	48V	
DRL-G 2239	24W	140xØ80	24°	48V	

## HANGING



PRODUCT CODE	WATT	SIZE (LxWxH)	BEAM ANGLE	INPUT VOLTAGE	CCT
DRL-G 2240	12W	300xØ38	24°	48V	CCT-Tunable 2700k- 5500k 3CCT Switch+ Smart (Tuya)

## SLIM LASER MOVABLE



PRODUCT CODE	WATT	SIZE (LxWxH)	BEAM ANGLE	INPUT VOLTAGE	CCT
DRL-G 2241	6W	128x34x75 mm	24°	48V	CCT-Tunable 2700k-5500k 3CCT Switch+ Smart (Tuya)
DRL-G 2242	12W	235x34x75 mm	24°	48V	
DRL-G 2243	18W	345x34x75 mm	24°	48V	

## FOSTER



PRODUCT CODE	WATT	SIZE (LxWxH)	BEAM ANGLE	INPUT VOLTAGE	CCT
DRL-G 2244	6W	73xØ50	24°	48V	CCT-Tunable 2700k-5500k 3CCT Switch+ Smart (Tuya)
DRL-G 2245	2X6W	73xØ50x2	24°	48V	

## L LINEAR OUTER



PRODUCT CODE	WATT	SIZE (LxWxH)	BEAM ANGLE	INPUT VOLTAGE	CCT
DRL-G 2246	20W OUTER SIDE	320x305x20x45 mm	24°	48V	CCT-Tunable 2700k-5500k 3CCT Switch+ Smart (Tuya)

## L LINEAR INNER



PRODUCT CODE	WATT	SIZE (LxWxH)	BEAM ANGLE	INPUT VOLTAGE	CCT
DRL-G 2247	20W INNER SIDE	310x20x45 mm	24°	48V	CCT-Tunable 2700k-5500k 3CCT Switch+ Smart (Tuya)

### SURFACE TRACK CHANNEL



PRODUCT CODE	SIZE (LxWxH)	LENGTH	INPUT VOLTAGE
DRL-G 2248 A	1000x17x26 MM	1 MTR	48V
DRL-G 2248 B	2000x17x26 MM	2 MTR	48V

### RECESSED TRACK CHANNEL



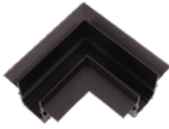
PRODUCT CODE	SIZE (LxWxH)	LENGTH	INPUT VOLTAGE
DRL-G 2249 A	1000x50x40 MM	1 MTR	48V
DRL-G 2249 B	2000x50x40 MM	2 MTR	48V

### 90° TRACK CHANNEL



PRODUCT CODE	SIZE (LxWxH)
DRL-G 2250 11054	Ø900x690

## 20MM JOINTER & ACCESSORIES



**DRL-G 2251 ROC**

20MM RECESSED  
OUTER CORNER



**DRL-G 2251 ROCD**

20MM RECESSED  
OUTER CORNER - DALI



**DRL-G 2251 RIC**

20MM RECESSED  
INNER CORNER



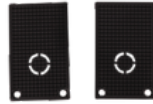
**DRL-G 2251 RT**

20MM RECESSED  
T JOINTER



**DRL-G 2251 RX**

20MM RECESSED  
X JOINTER



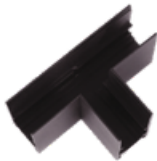
**DRL-G 2251 REP**

20MM RECESSED  
END CAP



**DRL-G 2251 SIC**

20MM SURFACE  
INNER  
CORNER



**DRL-G 2251 ST**

20MM SURFACE  
T JOINTER



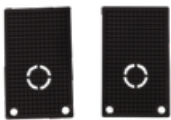
**DRL-G 2251 SX**

20MM SURFACE  
X JOINTER



**DRL-G 2251 SOC**

20MM SURFACE  
OUTER CORNER



**DRL-G 2251 SEP**

20MM SURFACE  
END CAP



**DRL-G 2251 SHW**

20MM SURFACE  
HANGING WIRE



**DRL-G 2251 DC3**

20MM DUST  
COVER 3MTR



**DRL-G 2251 HC**

20MM HANGING  
CLIP FOR SURFACE

## 20MM JOINTER & ACCESSORIES



**DRL-G 2251 SAS**

20MM SURFACE  
ACCESSORIES



**DRL-G 2251 RAS**

20MM RECESSED  
ACCESSORIES



**DRL-G 2251 PC**

20MM POWER  
CONNECTOR



**DRL-G 2251 SC**

20MM STRAIGHT  
CONNECTOR



**DRL-G 2251 SCD**

20MM STRAIGHT  
CONNECTOR-DALI



**DRL-G 2251 L2**

20MM L2  
CONNECTOR



**DRL-G 2251 LC**

20MM L LONG  
CONNECTOR



**DRL-G 2251 3WC**

20MM 3 WAY  
CONNECTOR



**DRL-G 2251 4WC**

20MM 4 WAY  
CONNECTOR



**DRL-G 2251 SX**

20MM 48V  
100W POWER SUPPLY



**DRL-G 2251 3WC**

20MM 48V  
200W POWER SUPPLY



**DRL-G 2251 4WC**

20MM 48V  
200W TUYA MESH

## SLIM LASER MOVABLE



PRODUCT CODE	WATT	SIZE (LxWxH)	BEAM ANGLE	INPUT VOLTAGE	CCT
DRL-G 2252	12W	220x45x20 mm	24°	48V	CCT-Tunable 2700k-5500k 3CCT Switch+ Smart (Tuya)

## LINEAR



PRODUCT CODE	WATT	SIZE (LxWxH)	BEAM ANGLE	INPUT VOLTAGE	CCT
DRL-G 2253	20W	605x53x20 mm	100°	48V	CCT-Tunable 2700k-5500k 3CCT Switch+ Smart (Tuya)

## TRACK SPOT



PRODUCT CODE	WATT	SIZE (LxWxH)	BEAM ANGLE	INPUT VOLTAGE	CCT
DRL-G 2254	20W	100xØ45	24°	48V	CCT-Tunable 2700k-5500k 3CCT Switch+ Smart (Tuya)

## 20MM SURFACE TRACK CHANNEL



PRODUCT CODE	SIZE (LxWxH)	LENGTH	INPUT VOLTAGE
DRL-G 2255	1000x17x26 MM	1 MTR	48V

## 20MM RECESSED TRACK CHANNEL



PRODUCT CODE	SIZE (LxWxH)	LENGTH	INPUT VOLTAGE
DRL-G 2256	1000x50x40 MM	1 MTR	48V



**DRL-G 2257 LC**

20 MM LONG CONNECTOR



**DRL-G 2257 TD**

20 MM POWER CONNECTOR



**DRL-G 2257 SC**

20MM STRAIGHT CONNECTOR



**DRL-G 2257 100W**

20MM 48V 100W POWER SUPPLY



**DRL-G 2257 200W**

20MM 48V 200W POWER SUPPLY



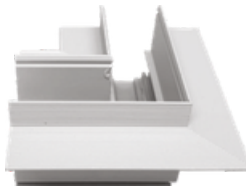
**DRL-G 2257 REP**

20MM RECESSED END CAP



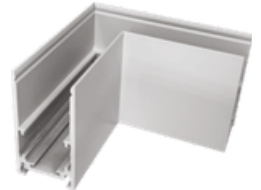
**DRL-G 2257 SEP**

20MM SURFACE END CAP



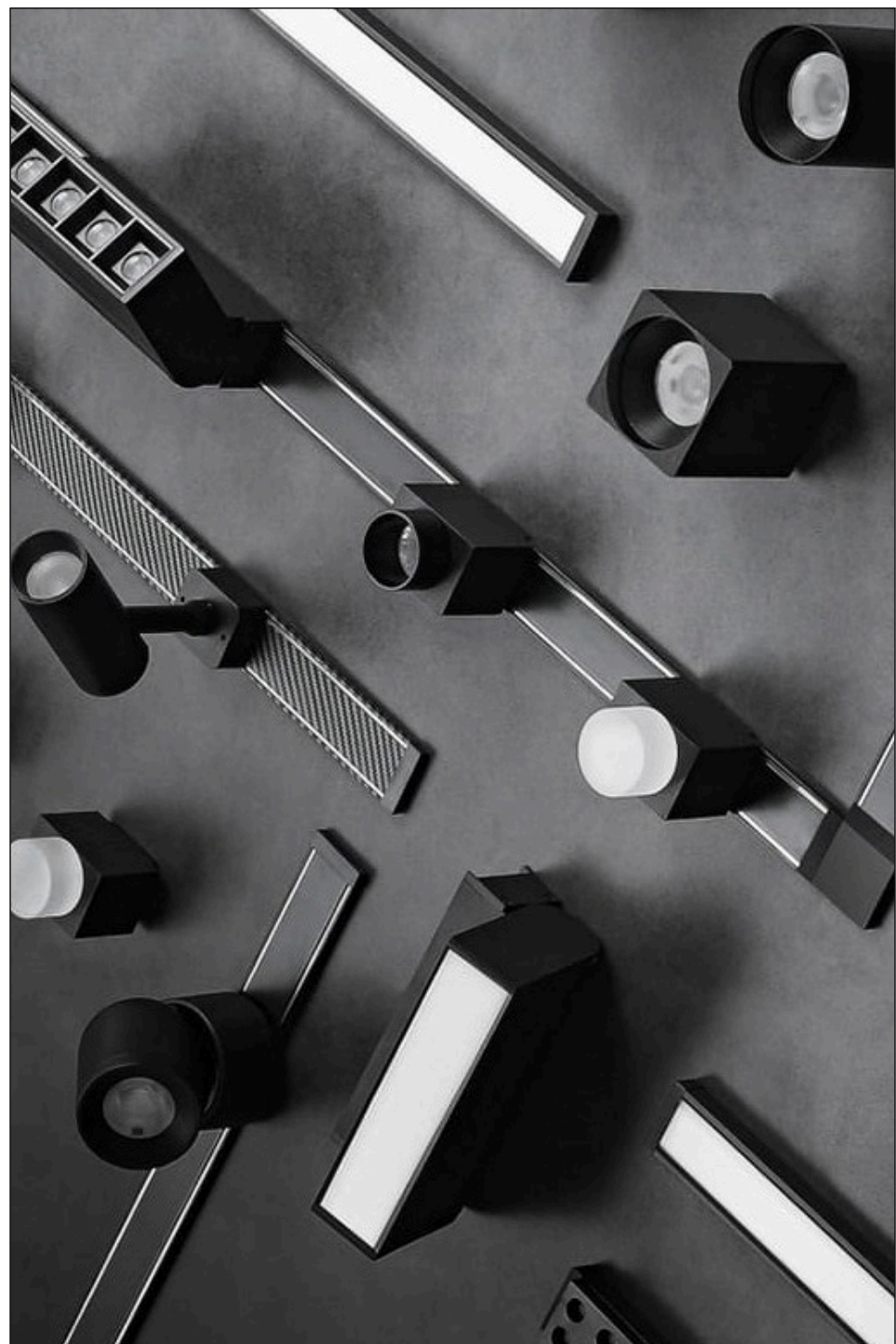
**DRL-G 2257 ROC**

20MM RECESSED OUTER CORNER



**DRL-G 2257 SOC**

20MM SURFACE OUTER CORNER



## LINEAR



PRODUCT CODE	WATT	SIZE (LxWxH)	BEAM ANGLE	INPUT VOLTAGE	CCT
DRL-G 2258	12W	340x30x14 mm	100°	48V	CCT-Tunable 2700k-5500k
DRL-G 2259	24W	640x30x14 mm	100°	48V	

## LASER SPOT



PRODUCT CODE	WATT	SIZE (LxWxH)	BEAM ANGLE	INPUT VOLTAGE	CCT
DRL-G 2260	10W	240x30x20 mm	30°	48V	CCT-Tunable 2700k-5500k
DRL-G 2261	20W	670x30x20 mm	30°	48V	

## LASER MOVABLE



PRODUCT CODE	WATT	SIZE (LxWxH)	BEAM ANGLE	INPUT VOLTAGE	CCT
DRL-G 2262	10W	140x35x105 mm	30°	48V	CCT-Tunable 2700k-5500k
DRL-G 2263	20W	275x35x105 mm	30°	48V	

## TRACK SPOT



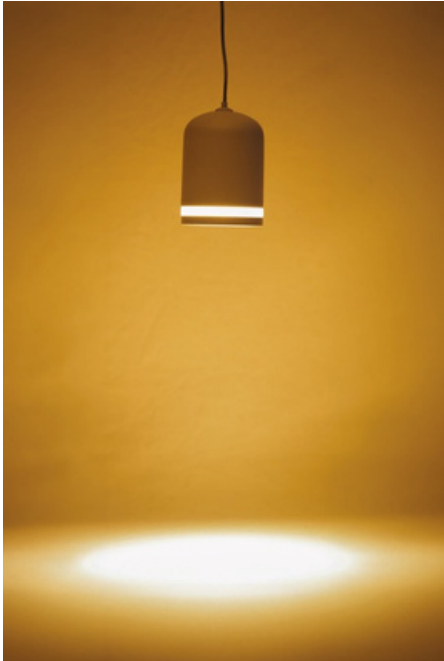
PRODUCT CODE	WATT	SIZE (LxWxH)	BEAM ANGLE	INPUT VOLTAGE	CCT
DRL-G 2264	7W	90xØ35	24°	48V	CCT-Tunable 2700k-5500k
DRL-G 2265	12W	150XØ48	24°	48V	

## ROUND SURFACE MOVABLE



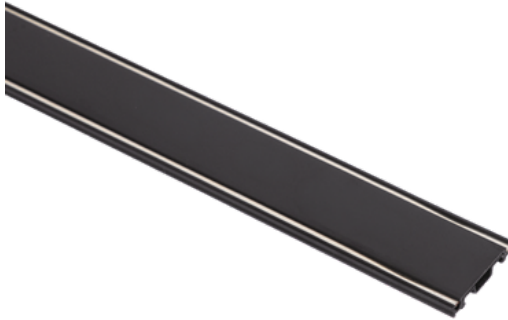
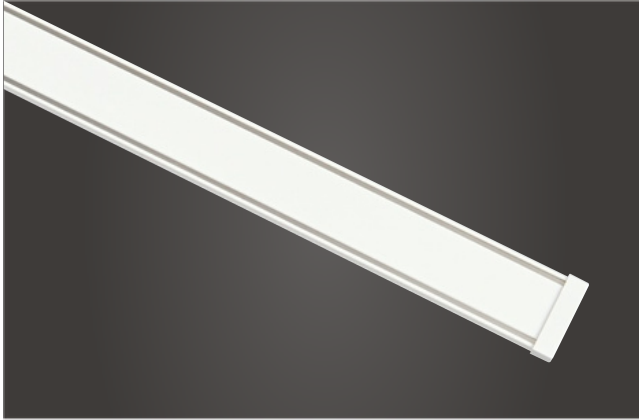
PRODUCT CODE	WATT	SIZE (LxWxH)	BEAM ANGLE	INPUT VOLTAGE	CCT
DRL-G 2266	7W	95xØ53	24°	48V	CCT-Tunable 2700k-5500k

## HANGING



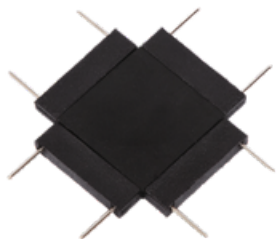
PRODUCT CODE	WATT	SIZE (LxWxH)	BEAM ANGLE	INPUT VOLTAGE	CCT
DRL-G 2267	7W	91xØ75	24°	48V	CCT-Tunable 2700k-5500k

## SURFACE TRACK CHANNEL



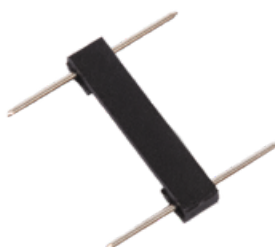
PRODUCT CODE	SIZE (LxWxH)	LENGTH	INPUT VOLTAGE
DRL-G 2268	1000x30x5 MM	1 MTR	48V
DRL-G 2269	2000x30x5 MM	2 MTR	48V

## CONNECTOR & ACCESSORIES



**DRL-G 2270 XC**

30MM CROSSXCONNECTOR



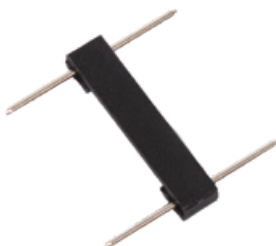
**DRL-G 2270 SC**

30MM STRAIGHTCONNECTOR



**DRL-G 2270 IOC**

30MM IN & OUT CONNECTOR



**DRL-G 2270 IOC**

30MM IN & OUT CONNECTOR



**DRL-G 2270 IOC**

30MM IN & OUT CONNECTOR



**DRL-G 2270 100W**

30MM 48V100WPOWERSUPPLY



**DRL-G 2270 200W**

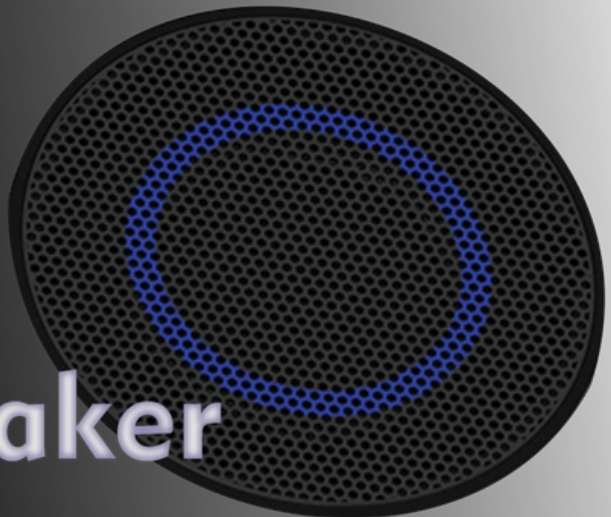
30MM 48V200WPOWERSUPPLY

## TRACK SPEAKER



PRODUCT CODE	WATT	SIZE (LxWxH)	BEAM ANGLE	INPUT VOLTAGE	CCT
DRL-G 2271	10W	75xØ63	20 mtr Accessibility	48V	Bluetooth connection

Track  
Bluetooth  
Speaker

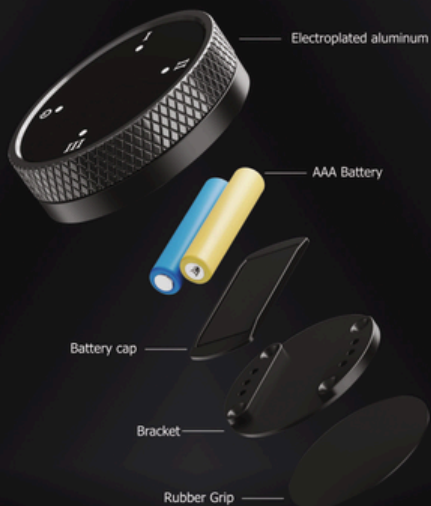


## SMART KNOB



PRODUCT CODE	AVAILABLE	SIZE (LXWXH)
DRL-G 2272	WITHOUT STAND	Ø70x20H mm
DRL-G 2273	WITH STAND	Ø70x60H mm

Meticulously crafted  
to bring you an extraordinary tactile experience



### **Smart Knob Remote Controller**

Enjoy a smart life





## NOVA TRIMLESS



MATT WHITE



NICKEL

PRODUCT CODE	WATT	SIZE (LxWxH)	BEAM ANGLE	INPUT VOLTAGE	RANGE OF PROTOCOL
DRL-G 2274	5W	50x45x65 MM	36°	3CCT TUNABLE / 27K,3K,35K 4K,5K,6K	Tuya BT+RF Tuya Zugbee Dali DT6/DT8
	10W	50x45x110 MM	36°		

## NOVA RIMLESS



MATT WHITE



NICKEL

PRODUCT CODE	WATT	SIZE (LxWxH)	BEAM ANGLE	INPUT VOLTAGE	RANGE OF PROTOCOL
DRL-G 2275	5W	69x43x69 MM	36°	3CCT TUNABLE / 27K,3K,35K 4K,5K,6K	Tuya BT+RF Tuya Zugbee Dali DT6/DT8
	10W	69x43x114 MM	36°		

## NOVA



NICKEL



MATT WHITE

PRODUCT CODE	WATT	SIZE (LxWxH)	BEAM ANGLE	INPUT VOLTAGE	RANGE OF PROTOCOL
DRL-G 2276	5W	60x60*52x52*69 MM	36°	3CCT TUNABLE / 27K,3K,35K 4K,5K,6K	Tuya BT+RF Tuya Zugbee Dali DT6/DT8
	10W	60x60*52x52*114 MM	36°		

## NOVA TWINS



MATT WHITE



NICKEL

PRODUCT CODE	WATT	SIZE (LxWxH)	BEAM ANGLE	INPUT VOLTAGE	RANGE OF PROTOCOL
DRL-G 2277	2X5W	110x60*103x52*69 MM	36°	3CCT TUNABLE / 27K,3K,35K 4K,5K,6K	Tuya BT+RF Tuya Zugbee Dali DT6/DT8
	2X10W	110x60*103x52*114 MM	36°		

## NOVA TRIPLE



MATT WHITE



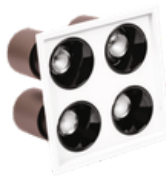
NICKEL

PRODUCT CODE	WATT	SIZE (LxWxH)	BEAM ANGLE	INPUT VOLTAGE	RANGE OF PROTOCOL
DRL-G 2278	3 X 5W	162x60*152x52*69 MM	36°	3CCT TUNABLE / 27K,3K,35K 4K,5K,6K	Tuya BT+RF Tuya Zugbee Dali DT6/DT8
	3 X 10W	162x60*152x52*114 MM	36°		

## NOVA QUADRUPL



MATT WHITE



NICKEL

PRODUCT CODE	WATT	SIZE (LxWxH)	BEAM ANGLE	INPUT VOLTAGE	RANGE OF PROTOCOL
DRL-G 2279	4 X 5W	112x112*103x103*69 MM	36°	3CCT TUNABLE / 27K,3K,35K 4K,5K,6K	Tuya BT+RF Tuya Zugbee Dali DT6/DT8
	4 X 10W	112x112*103x103*114 MM	36°		

## AURA TRIMLESS



NICKEL



MATT WHITE

PRODUCT CODE	WATT	SIZE (LxWxH)	BEAM ANGLE	INPUT VOLTAGE	RANGE OF PROTOCOL
DRL-G 2280	12W	61x55x90 MM	36°	3CCT TUNABLE / 27K,3K,35K 4K,5K,6K	Tuya BT+RF Tuya Zugbee Dali DT6/DT8
	18 W	61x55x110 MM	36°		

## AURA RIMLESS



NICKEL



MATT WHITE

PRODUCT CODE	WATT	SIZE (LxWxH)	BEAM ANGLE	INPUT VOLTAGE	RANGE OF PROTOCOL
DRL-G 2281	12W	80x52x95 MM	36°	3CCT TUNABLE / 27K,3K,35K 4K,5K,6K	Tuya BT+RF Tuya Zugbee Dali DT6/DT8
	18W	80x52x110 MM	36°		

## ELIO T RIMLESS



MATT GRAY



MATT BLACK



NICKEL

PRODUCT CODE	WATT	SIZE (LxWxH)	BEAM ANGLE	INPUT VOLTAGE	RANGE OF PROTOCOL
DRL-G 2282	7 W	55x45x70 MM	15°/36°/60°	3CCT TUNABLE / 27K,3K,35K 4K,5K,6K	Tuya BT+RF Tuya Zigbee Dali DT6/DT8 Dali DT6/DT8
	12 W	83x73x87 MM	15°/36°/60°		

## ELIO RIMLESS



NICKEL



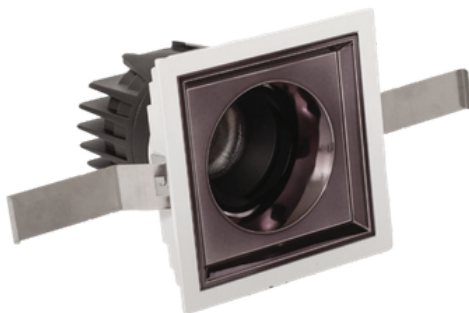
MATT BLACK



MATT GRAY

PRODUCT CODE	WATT	SIZE (LxWxH)	BEAM ANGLE	INPUT VOLTAGE	RANGE OF PROTOCOL
DRL-G 2283	7 W	80x54x75 MM	15°/36°/60°	3CCT TUNABLE / 27K,3K,35K 4K,5K,6K	Tuya BT+RF Tuya Zigbee Dali DT6/DT8
	12 W	105x75x85 MM	15°/36°/60°		

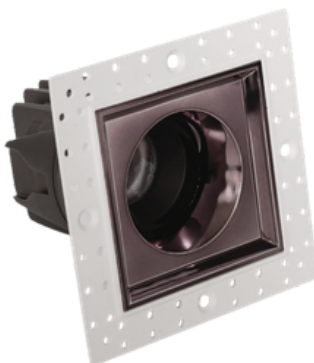
## ELIO SQUARE T RIMLESS



NICKEL

PRODUCT CODE	WATT	SIZE (LxWxH)	BEAM ANGLE	INPUT VOLTAGE	RANGE OF PROTOCOL
DRL-G 2284	12W	83x83*80x80*90 MM	15°/36°/60°	3CCT TUNABLE / 27K,3K,35K 4K,5K,6K	Tuya BT+RF Tuya Zigbee Dali DT6/DT8

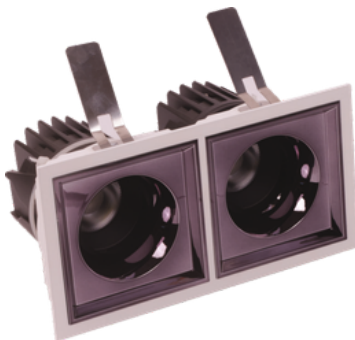
## ELIO SQUARE RIMLESS



NICKEL

PRODUCT CODE	WATT	SIZE (LxWxH)	BEAM ANGLE	INPUT VOLTAGE	RANGE OF PROTOCOL
DRL-G 2285	12W	100x100 *74x74* 90 MM	15°/36°/60°	3CCT TUNABLE / 27K,3K,35K 4K,5K,6K	Tuya BT+RF Tuya Zigbee Dali DT6/DT8

## ELIO SQUARE TWIN



NICKEL

PRODUCT CODE	WATT	SIZE (OxCxH)	BEAM ANGLE	INPUT VOLTAGE	RANGE OF PROTOCOL
DRL-G 2286	2X12W	157x157 147*x147*90 MM	15°/36°/60°	3CCT TUNABLE / 27K,3K,35K 4K,5K,6K	Tuya BT+RF Tuya Zigbee Dali DT6/DT8

## ELIO MOVABLE PIPE



NICKEL

PRODUCT CODE	WATT	SIZE (OxCxH)	BEAM ANGLE	INPUT VOLTAGE	RANGE OF PROTOCOL
DRL-G 2287	12W	83x72x100 MM	36°	3CCT TUNABLE / 27K,3K,35K 4K,5K,6K	Tuya BT+RF Tuya Zigbee Dali DT6/DT8

## ZENO



MATT WHITE



NICKEL

PRODUCT CODE	WATT	SIZE (OxCxH)	BEAM ANGLE	INPUT VOLTAGE	RANGE OF PROTOCOL
DRL-G 2288	12W	82x75x95	36°	3CCT TUNABLE / 27K,3K,35K 4K,5K,6K	Tuya BT+RF Tuya Zigbee Dali DT6/DT8

## ZENO RIMLESS



MATT WHITE



NICKEL

PRODUCT CODE	WATT	SIZE (OxCxH)	BEAM ANGLE	INPUT VOLTAGE	RANGE OF PROTOCOL
DRL-G 2289	12W	100x75x95	36°	3CCT TUNABLE / 27K,3K,35K 4K,5K,6K	Tuya BT+RF Tuya Zigbee Dali DT6/DT8

## VELO ROUND



PRODUCT CODE	WATT	SIZE (OxCxH)	BEAM ANGLE	INPUT VOLTAGE	RANGE OF PROTOCOL
DRL-G 2290	12W	84x75x57 MM	24°	3CCT TUNABLE / 27K,3K,35K 4K,5K,6K	Tuya BT+RF Tuya Zigbee Dali DT6/DT8

## VELO PIN HOLE



PRODUCT CODE	WATT	SIZE (OxCxH)	BEAM ANGLE	INPUT VOLTAGE	RANGE OF PROTOCOL
DRL-G 2291	12W	84x75x57 MM	24°	3CCT TUNABLE / 27K,3K,35K 4K,5K,6K	Tuya BT+RF Tuya Zigbee Dali DT6/DT8

## VELO SQUARE



PRODUCT CODE	WATT	SIZE (LxWxH)	BEAM ANGLE	INPUT VOLTAGE	RANGE OF PROTOCOL
DRL-G 2292	12W	85x85x75x75x61 MM	24°	3CCT TUNABLE / 27K,3K,35K 4K,5K,6K	Tuya BT+RF Tuya Zugbee Dali DT6/DT8
DRL-G 2293	2X12W	160x85*150x72*63 MM	24°		

## VELO I BALL



PRODUCT CODE	WATT	SIZE (OxCxH)	BEAM ANGLE	INPUT VOLTAGE	RANGE OF PROTOCOL
DRL-G 2294	12W	100x100* 74x74x90	24°	3CCT TUNABLE / 27K,3K,35K 4K,5K,6K	Tuya BT+RF Tuya Zigbee Dali DT6/DT8

## KIRO IP54



PRODUCT CODE	WATT	SIZE (LxWxH)	BEAM ANGLE	INPUT VOLTAGE	RANGE OF PROTOCOL
DRL-G 2295	9W	56x50x58 MM	60°	3CCT TUNABLE / 27K,3K,35K 4K,5K,6K	Wi fi 2.4G+ RF Tuya BT Tuya Zigbee Dali DT6/DT8
DRL-G 2296	9W	60x60*48x18*69 MM	60°		

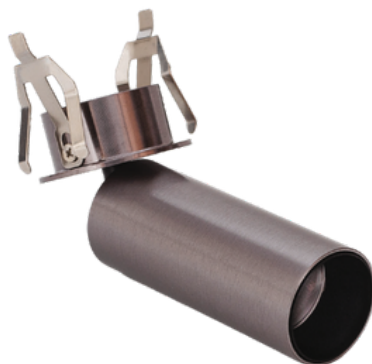
## KIRO IP54



BODY COLOUR

PRODUCT CODE	WATT	SIZE (LxWxH)	BEAM ANGLE	INPUT VOLTAGE	RANGE OF PROTOCOL
DRL-G 2297	8W	45x40x101 MM	15°/36°	3CCT TUNABLE / 27K,3K,35K 4K,5K,6K	Tuya BT+RF Tuya Zugbee Dali DT6/DT8
	12W	55x50x98 MM	15°/36°		

## ORIA



PRODUCT CODE	WATT	SIZE (OxCxH)	BEAM ANGLE	INPUT VOLTAGE	RANGE OF PROTOCOL
DRL-G 2298	7W	Ø30xØ40x75 MM	36°	3CCT TUNABLE / 27K,3K,35K 4K,5K,6K	Tuya BT+RF Tuya Zigbee Dali DT6/DT8

## SYLO



PRODUCT CODE	WATT	SIZE (OxCxH)	BEAM ANGLE	INPUT VOLTAGE	RANGE OF PROTOCOL
DRL-G 2299	7W	Ø29xØ38x75 MM	36°	3CCT TUNABLE / 27K,3K,35K 4K,5K,6K	Tuya BT+RF Tuya Zigbee Dali DT6/DT8

## LUXO



PRODUCT CODE	WATT	SIZE (LxWxH)	BEAM ANGLE	INPUT VOLTAGE	RANGE OF PROTOCOL
DRL-G 2300	7W	Ø32xØ31x90 MM	36°	3CCT TUNABLE / 27K,3K,35K 4K,5K,6K	Tuya BT+RF Tuya Zugbee Dali DT6/DT8
	12W	Ø42xØ42x111 MM	36°		

## VYNE



PRODUCT CODE	WATT	SIZE (OxCxH)	BEAM ANGLE	INPUT VOLTAGE	RANGE OF PROTOCOL
DRL-G 2301	12W	62x55x87 MM	36°	3CCT TUNABLE / 27K,3K,35K 4K,5K,6K	Tuya BT+RF Tuya Zigbee Dali DT6/DT8

## ARCO



PRODUCT CODE	WATT	SIZE (OxCxH)	BEAM ANGLE	INPUT VOLTAGE	RANGE OF PROTOCOL
DRL-G 2302	12W	63x55x105 MM	55°	3CCT TUNABLE / 27K,3K,35K 4K,5K,6K	Tuya BT+RF Tuya Zigbee Dali DT6/DT8

## LUME



360° MOVING

PRODUCT CODE	WATT	SIZE (LxWxH)	BEAM ANGLE	INPUT VOLTAGE	RANGE OF PROTOCOL
DRL-G 2303	12W	62x55x123 MM	36°	3CCT TUNABLE / 27K,3K,35K 4K,5K,6K	Tuya BT+RF Tuya Zugbee Dali DT6/DT8
	18W	62x55x123 MM	36°		
	24W	73x65x165 MM	49°		

## TORO TRIMLESS



PRODUCT CODE	WATT	SIZE (LxWxH)	BEAM ANGLE	INPUT VOLTAGE	RANGE OF PROTOCOL
DRL-G 2304	12W	65x55x100	20°/30°/50°	3CCT TUNABLE / 27K,3K,35K 4K,5K,6K	Tuya BT+RF Tuya Zugbee Dali DT6/DT8
	18W	75x65x130	20°/30°/50°		
	25W	90x80x140	20°/30°/50°		

## TORO RIMLESS



PRODUCT CODE	WATT	SIZE (LxWxH)	BEAM ANGLE	INPUT VOLTAGE	RANGE OF PROTOCOL
DRL-G 2305	12W	62x55x100	20°/30°/50°	3CCT TUNABLE / 27K,3K,35K 4K,5K,6K	Tuya BT+RF Tuya Zugbee Dali DT6/DT8
	18W	100x65x130	20°/30°/50°		
	25W	120x80x140	20°/30°/50°		

## TORO SQ2



MATT BLACK

PRODUCT CODE	WATT	SIZE (LxWxH)	BEAM ANGLE	INPUT VOLTAGE	RANGE OF PROTOCOL
DRL-G 2306	2x12W	120x65*110x55*110	20°/30°/50°	3CCT TUNABLE / 27K,3K,35K 4K,5K,6K	Tuya BT+RF Tuya Zugbee Dali DT6/DT8
	2x18W	140x75*130x65*135	20°/30°/50°		

## TORO CURVE



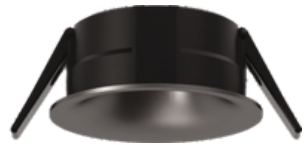
MATT WHITE



DARK CHROME



ANTIQUE GOLD



ANTIQUE GREY

PRODUCT CODE	WATT	SIZE (LxWxH)	BEAM ANGLE	INPUT VOLTAGE	RANGE OF PROTOCOL
DRL-G 2307	12W	65x55x100	20°/30°/50°	3CCT TUNABLE / 27K,3K,35K 4K,5K,6K	Tuya BT+RF Tuya Zugbee Dali DT6/DT8
	18W	75x65x130	20°/30°/50°		

## TORO ARROW



DARK CHROME



ANTIQUE GOLD



ANTIQUE GREY



MATT WHITE

PRODUCT CODE	WATT	SIZE (LxWxH)	BEAM ANGLE	INPUT VOLTAGE	RANGE OF PROTOCOL
DRL-G 2308	12W	65x55x100	20°/30°/50°	3CCT TUNABLE / 27K,3K,35K 4K,5K,6K	Tuya BT+RF Tuya Zugbee Dali DT6/DT8
	18W	75x65x130	20°/30°/50°		

## TORO BLACK HOLE TRIMLESS



PRODUCT CODE	WATT	SIZE (OxCxH)	BEAM ANGLE	INPUT VOLTAGE	RANGE OF PROTOCOL
DRL-G 2309	12W	65x55x100	20°/30°/50°	3CCT TUNABLE / 27K,3K,35K 4K,5K,6K	Tuya BT+RF Tuya Zigbee Dali DT6/DT8

## TORO BLACK HOLE RIMLESS



PRODUCT CODE	WATT	SIZE (OxCxH)	BEAM ANGLE	INPUT VOLTAGE	RANGE OF PROTOCOL
DRL-G 2310	12W	82x55x100	20°/30°/50°	3CCT TUNABLE / 27K,3K,35K 4K,5K,6K	Tuya BT+RF Tuya Zigbee Dali DT6/DT8

## TORO OVAL TRIMLESS



PRODUCT CODE	WATT	SIZE (LxWxH)	BEAM ANGLE	INPUT VOLTAGE	RANGE OF PROTOCOL
DRL-G 2311	12W	65x55x100	20°/30°/50°	3CCT TUNABLE / 27K,3K,35K 4K,5K,6K	Tuya BT+RF Tuya Zugbee Dali DT6/DT8
	18W	75x65x130	20°/30°/50°		

## TORO OVAL RIMLESS



PRODUCT CODE	WATT	SIZE (LxWxH)	BEAM ANGLE	INPUT VOLTAGE	RANGE OF PROTOCOL
DRL-G 2312	12W	82x55x100	20°/30°/50°	3CCT TUNABLE / 27K,3K,35K 4K,5K,6K	Tuya BT+RF Tuya Zugbee Dali DT6/DT8
	18W	100x65x130	20°/30°/50°		

## TORO EYE TRIMLESS



PRODUCT CODE	WATT	SIZE (LxWxH)	BEAM ANGLE	INPUT VOLTAGE	RANGE OF PROTOCOL
DRL-G 2313	7W	76x65x31	36°	3CCT TUNABLE / 27K,3K,35K 4K,5K,6K	Tuya BT+RF Tuya Zugbee Dali DT6/DT8
	12W	90x80x58	36°		

## TORO EYE RIMLESS



PRODUCT CODE	WATT	SIZE (LxWxH)	BEAM ANGLE	INPUT VOLTAGE	RANGE OF PROTOCOL
DRL-G 2314	18W	100x65x31	36°	3CCT TUNABLE / 27K,3K,35K 4K,5K,6K	Tuya BT+RF Tuya Zugbee Dali DT6/DT8
	25W	120x80x58	36°		

## TORO EYE SQ2



PRODUCT CODE	WATT	SIZE (OxCxH)	BEAM ANGLE	INPUT VOLTAGE	
DRL-G 2315	27W	75x140*65x130*38	36°	3CCT TUNABLE / 27K,3K,35K 4K,5K,6K	Tuya BT+RF Tuya Zigbee Dali DT6/DT8

## TORO SHORT PIPE TRIMLESS



PRODUCT CODE	WATT	SIZE (OxCxH)	BEAM ANGLE	INPUT VOLTAGE	RANGE OF PROTOCOL
DRL-G 2316	12W	90x80x90	36°	3CCT TUNABLE / 27K,3K,35K 4K,5K,6K	Tuya BT+RF Tuya Zigbee Dali DT6/DT8

## TORO SHORT PIPE RIMLESS



PRODUCT CODE	WATT	SIZE (OxCxH)	BEAM ANGLE	INPUT VOLTAGE	RANGE OF PROTOCOL
DRL-G 2317	12W	120x80x90	36°	3CCT TUNABLE / 27K,3K,35K 4K,5K,6K	Tuya BT+RF Tuya Zigbee Dali DT6/DT8

## TORO SHORT PIPE TRIMLESS



PRODUCT CODE	WATT	SIZE (OxCxH)	BEAM ANGLE	INPUT VOLTAGE	RANGE OF PROTOCOL
DRL-G 2318	12W	90x80x165	36°	3CCT TUNABLE / 27K,3K,35K 4K,5K,6K	Tuya BT+RF Tuya Zigbee Dali DT6/DT8

## TORO LONG PIPE RIMLESS



PRODUCT CODE	WATT	SIZE (OxCxH)	BEAM ANGLE	INPUT VOLTAGE	RANGE OF PROTOCOL
DRL-G 2319	12W	120x80x65	36°	3CCT TUNABLE / 27K,3K,35K 4K,5K,6K	Tuya BT+RF Tuya Zigbee Dali DT6/DT8

## TORO SLIM TRIMLESS



PRODUCT CODE	WATT	SIZE (OxCxH)	BEAM ANGLE	INPUT VOLTAGE	RANGE OF PROTOCOL
DRL-G 2320	12W	90x80x35	36°	3CCT TUNABLE / 27K,3K,35K 4K,5K,6K	Tuya BT+RF Tuya Zigbee Dali DT6/DT8

## TORO SLIM RIMLESS



PRODUCT CODE	WATT	SIZE (OxCxH)	BEAM ANGLE	INPUT VOLTAGE	RANGE OF PROTOCOL
DRL-G 2321	12W	120x80x35	36°	3CCT TUNABLE / 27K,3K,35K 4K,5K,6K	Tuya BT+RF Tuya Zigbee Dali DT6/DT8



## GYPSUM SPOT LIGHT



PRODUCT CODE	SIZE (OUTERxCUTOUTxHEIGHT)	
DRL-G 2322	130x130x45	USE LAMP HOLDER - MR16 / GU10mm

## GYPSUM SPOT LIGHT



PRODUCT CODE	SIZE (OUTERxCUTOUTxHEIGHT)	
DRL-G 2323	200x200x60	USE LAMP HOLDER - MR16 / GU10

## GYPSUM SPOT LIGHT



PRODUCT CODE	SIZE (OUTERxCUTOUTxHEIGHT)	
DRL-G 2324	80x80x50	USE LAMP HOLDER - MR16 / GU10

# Knowledge of Lights

## Lumen (Unit: lm)

Lumen is the standard unit for measuring luminous flux, indicating the total quantity of visible light emitted by a source. It reflects the overall brightness of the luminaire.

## Beam Angle (Unit: degrees)

Beam angle defines the spread of light emitted from a source. It's the angle where luminous intensity drops to 50% of its peak, determining how narrow or wide the light beam will appear.

## Colour Temperature (Unit: Kelvin)

Measured in Kelvin (K), color temperature defines the appearance of the light emitted—ranging from warm (yellowish) to cool (bluish) tones. It's based on the temperature of a black-body radiator that emits light of a similar color.

## Lux (Unit: lx)

Lux quantifies the amount of light hitting a surface. One lux equals one lumen per square meter, providing a direct measure of illumination intensity in a space.

## Driver

A driver is the essential electronic component that regulates and supplies the correct power to LED light sources, ensuring consistent performance and safety.

## Light Emitting Diode (LED)

An LED is a semiconductor device that transforms electrical energy into visible light, offering energy efficiency, longevity, and superior performance.

## Colour Rendering Index (CRI)

CRI measures a light source's ability to reveal the true colors of objects in comparison to natural light. Rated on a scale of 0 to 100, higher CRI ensures more accurate color representation.

## Kelvin

Kelvin is the unit used to describe color temperature, helping to distinguish between warm, neutral, and cool tones in lighting environments.

## Tunable & Dimmable LED

LEDs from DORO are fully dimmable and tunable, enhancing ambiance while improving energy efficiency. Dimming methods include

- A. Triac/Phase Cut (Leading or Trailing Edge)
- B. 1-10V DC Analog Dimming
- C. DSI (Digital Signal Interface)
- D. DALI (Digital Addressable Lighting Interface)

## IES Files

IES files, developed by the Illuminating Engineering Society (IESNA), provide standardized photometric data. Lighting designers use these files to simulate real-world lighting performance in professional design software.

## LED Driver

DORO Lights incorporates top-tier drivers from Fulham/Eaglerise/Osram/Philips – renowned global manufacturers. These constant-current drivers ensure optimal power delivery and come with a 2-year warranty.

## COB (Chip-On-Board) LED

COB technology mounts multiple LED chips directly onto a substrate to form a single module. This design reduces thermal resistance and improves light output and heat management.

## Design Adaptability

DORO embraces modular design to stay ahead in a fast-evolving LED industry. Future-proofing ensures seamless upgrades to next-generation modules without overhauling fixture designs.

## Colour Consistency in LEDs

DORO ensures consistent light quality through LED binning and MacAdam step classification. Each LED is categorized based on color, brightness, and voltage, maintaining uniform appearance across installations.

## Heat Management

Proper thermal design is critical to LED performance. DORO fixtures incorporate high-grade heat sinks that dissipate heat efficiently, extending the life and reliability of the LEDs.

## Dimming Control Protocols

Flickering often arises from mismatched drivers and control systems. At DORO, we ensure compatibility between our LEDs and drivers to deliver stable, flicker-free lighting performance.

## Why Lumens Matter More Than Watts
















In LED technology, lumen output is the true measure of performance – not wattage. As efficiency improves, newer LEDs produce significantly more lumens per watt, making wattage a less relevant metric.

# Suggestive Lux Level

Area	Lux
Offices – conference rooms	750
Shops	
Super markets	500
Show rooms – Car & General	500
Schools – Classrooms	500
Multi-Purpose Sports Hall	
Tabel Tennis, Gymnasium, Squash	500
Hospitals	
General	300
Examination	1000
Corridors General	150
Reception / Enquiry	300
Homes	
Living Rooms	
- Casual Rooms	150
-Desk and Prolonged Reading	300
Hotels	
Reception/Cashiers/Lobby	300
Coffee Bar/Restaurants	150

## IP Protection Codes

The IP prefix followed by two significant digits indicates the fixture's resistance to the penetration of solids and liquids safety rating (IEC 259 issue) 1st digit: against the penetration of solid body and contact with live components. 2nd digit against penetration by liquids.

<b>IP20</b>	Protection against ingress of solids objects of $\varnothing \geq 12\text{mm}$ . No protection against water.
<b>IP40</b>	Protection against ingress of solids objects of $\varnothing \geq 1\text{mm}$ . No protection against water.
<b>IP43</b> 	Protection against ingress of solids objects of $\varnothing \geq 1\text{mm}$ and against falling rain.
<b>IP44</b> 	Protection against ingress of solids objects of $\varnothing \geq 1\text{mm}$ and against water splashes from all sides.
<b>IP54</b>  	Protection against ingress of dust and water splashes from all sides.
<b>IP55</b>  	Protection against ingress of dust and jets of water from all directions.
<b>IP64</b>  	Protection against ingress of dust and water splashes from all directions.
<b>IP65</b>   	Protection against ingress of dust and jets of water from all directions.
<b>IP67</b>  	Dust-tight and protected against the effects of temporary immersion.
<b>IP68</b>  	Water splashed against the enclosure from any direction shall have no harmful effect.





Doro Lighting Solutions



Doro lighting solutions



Doro lighting solutions



[www.dorolightingsolutions.com](http://www.dorolightingsolutions.com)

